



**PHOTOBOXING LONDON → PRISONER OF COPACABANA**  
THE MUSE GALLERY & STUDIO / 269 PORTOBELLO RD / LONDON W11 1LR **OCTOBER 2020**



## PHOTOBOXING LONDON→PRISONER OF COPACABANA

**This exhibition is one of the many stories that will be told about the pandemic of 2020. It's uniqueness, perhaps, lies in the fact that it captures the moment in which an artist's voice, plans, and work were interrupted and transformed by the spread of a virus.**

The two series of works – Photoboxing London and Prisoner of Copacabana – are the “before” and “after” images of the pandemic, as the lockdown accelerated once incipient changes in the artist's work and research. Both series are also located in different stages of Marina's production cycle. While the Photoboxing London is the crowning of a research that began more than a year ago, the Copacabana series is filled with a more experimental, introspective atmosphere.

While the first group of works deals with real landscapes in pictures the artist took and then altered in her studio, the second series deals with imaginary surroundings that were created within the confines of her home, under lockdown. Outside in, inside out.

To dive into Marina Junqueira's work is to dive into a world where things are simultaneously familiar and outlandish. Images we thought we knew are presented to us through a whimsical, somewhat campy looking glass.

Preposterous creatures emerge in every scene, blobs of colour that, upon close inspection, reveal themselves to be cartoony beings with eyes, noses, mouths, teeth, hairs, eyelashes, beaks, breasts, tentacles — truly an anthology of limbs and parts.

These critters overrun some of London's most famous sites, bringing us to the moment when we must address the obvious cheesiness of using London's most tourist ridden spots as one of the main themes of a show set in Portobello Road, of all places. This exhibition was originally planned to open in July, when the summer heat drives the English away from their homeland and towards Costa Brava, Algarve, and the Canaries, when Portobello Road is crawling with tourists who are here to see precisely the sites Marina photographed and offered to the workings of her brightly coloured imagination. But in comes COVID19 and crushes our puny plans.

The works that would be met by tourists will now be seen by the English themselves, following strict safety protocol, in a city that has experienced the fear of an invisible entity, much more real and less friendly than the creatures decking the view of the Tower Bridge. Junqueira's gaze is driven by a genuine love for London that makes her, in her own word, “see a postcard in every corner”. It would be easy to chalk it all up to sly irony, but she insists that these works stem from admiration and from a sense of wonder that perhaps can only be experienced by tourists.

While in the Photoboxing series we see a marked difference between the photographs and the collage images, this sharp contrast between reality and fantasy vanishes as we arrive at the Copacabana Prisoner group. These pictures of tiny dioramas made up of colourful patterns leave our vision in disarray as we try to make sense of it, set the tiny masquerading creature apart from its surrounding. The angle of the photographs tricks us

and for an instant we can't be sure if this is a collage made up from two or three different photographs or a picture of an environment that is housing a strange mimetic game. The titles of each work seem to hint at a possible outline for the action that is unfolding before us. We can see the tiny paper characters, and I can't help but wonder what came first: the characters or the stage.

The truth is that their visual characteristics feed into each other because that is how they came to be: the creatures are made up from dry paint left on the canvas pad paper that is then cut out into different shapes.

The creatures are then placed against a painted background and, as the process of painting these backgrounds yield new blobs of dry paint, the process feeds back into itself. This seems very fitting once we remember these works were created during the lockdown brought on by the COVID19 pandemic.

It seems that at first Marina tried to find a home for her creatures in our world, and posteriorly built a world for them inside her own home. As we have the opportunity to observe the changes in her work and the unfolding of her research, we cannot but leave these works wondering what will come next.

Julia Debasse



# Tower Bird

Photoboxing London Collection  
Marina Junqueira 2020

Glicée print on Hahnemühle Museum Etching 350gms  
Limited edition of 20

81.5cm x 59.4cm

£340





## Wonder Love

Photoboxing London Collection  
Marina Junqueira 2020

---

Giclée print on Hahnemühle Fine Art Baryta 325gms  
Limited edition of 20

81.5cm x 59.4cm

£340





Buzz Tour

Photoboxing London Collection  
Marina Junqueira 2020

Glicée print on Hahnemühle Museum Etching 350gms  
Limited edition of 20

81.5cm x 59.4cm

£340





## High Lady

Photoboxing London Collection  
Marina Junqueira 2020

Giclée print on Hahnemuhle Fine Art Baryta 325gms  
Limited edition of 20

77cm x 54.4cm

£340





Glamden Tube

Photoboxing London Collection  
Marina Junqueira 2020

Glicée print on Hahnemühle Museum Etching 350gms  
Limited edition of 20

77.cm x 59.4cm

£340





## London Mince Pie

Photoboxing London Collection  
Marina Junqueira 2020

---

Glicée print on Hahnemühle Museum Etching 350gms  
Limited edition of 20

77.cm x 59.4cm

£340





# Glamden Town

Photoboxing London Collection  
Marina Junqueira 2020

Glicée print on Hahnemühle Museum Etching 350gms  
Limited edition of 20

54cm x 42cm

Price





# Follow Me

Prisoner of Copacabana Collection  
Marina Junqueira 2020

Giclée print on Hahnemuhle Museum Etching 350gms  
Limited edition of 30

56.5cm x 84cm

£330





## Lonely Cell

Prisoner of Copacabana Collection  
Marina Junqueira 2020

---

Giclée print on Hahnemühle Museum Etching 350gms  
Limited edition of 30

41cm x 59.4cm

£290





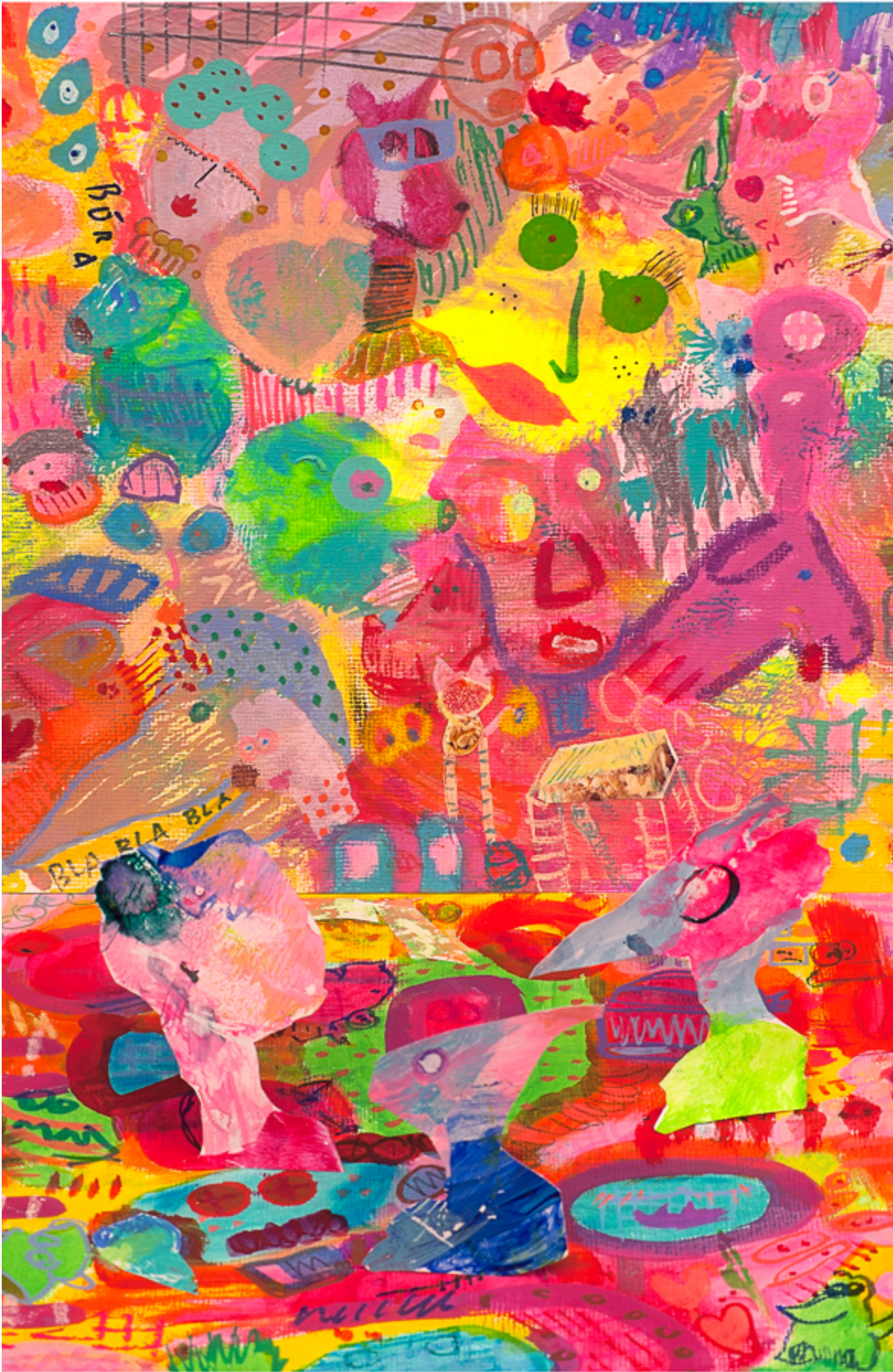
# Family Crisis

Prisoner of Copacabana Collection  
Marina Junqueira 2020

Giclée print on Hahnemühle Museum Etching 350gms  
Limited edition of 30

41cm x 59.4cm

£290





No Social Distance  
at the Round-House

Prisoner of Copacabana Collection  
Marina Junqueira 2020

Giclée print on Hahnemühle Museum Etching 350gms  
Limited edition of 30

59.4cm x 41cm

£290





Divorce with Lawyer

Photoboxing London Collection  
Marina Junqueira 2020

Giclée print on Hahnemühle 100% cotton  
Limited edition of 30

59.4cm x 41cm

£290





Please Don't Leave Me

Prisoner of Copacabana Collection  
Marina Junqueira 2020

Giclée print on Hahnemühle Museum Etching 350gms  
Limited edition of 30

59.4cm x 41cm

£290







**PHOTOBOXING LONDON → PRISONER OF COPACABANA**  
THE MUSE GALLERY & STUDIO / 269 PORTOBELLO RD / LONDON W11 1LR **OCTOBER 2020**



---

**Marina Junqueira**

[www.marinajunqueira.com](http://www.marinajunqueira.com)

---

**The Muse Gallery**

(UK Charity for the arts No. 1162300)

269 Portobello Road  
London W11 1LR

[www.themuseat269.com](http://www.themuseat269.com)

[info@themuseat269.com](mailto:info@themuseat269.com)

